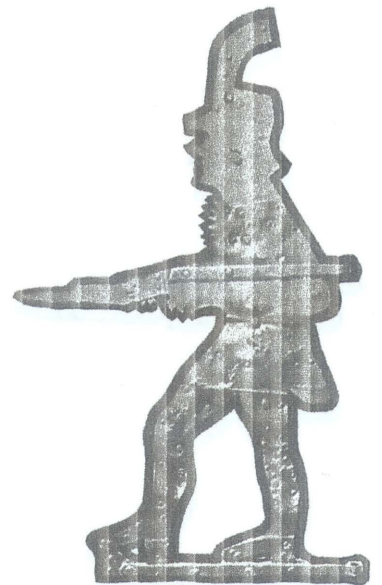
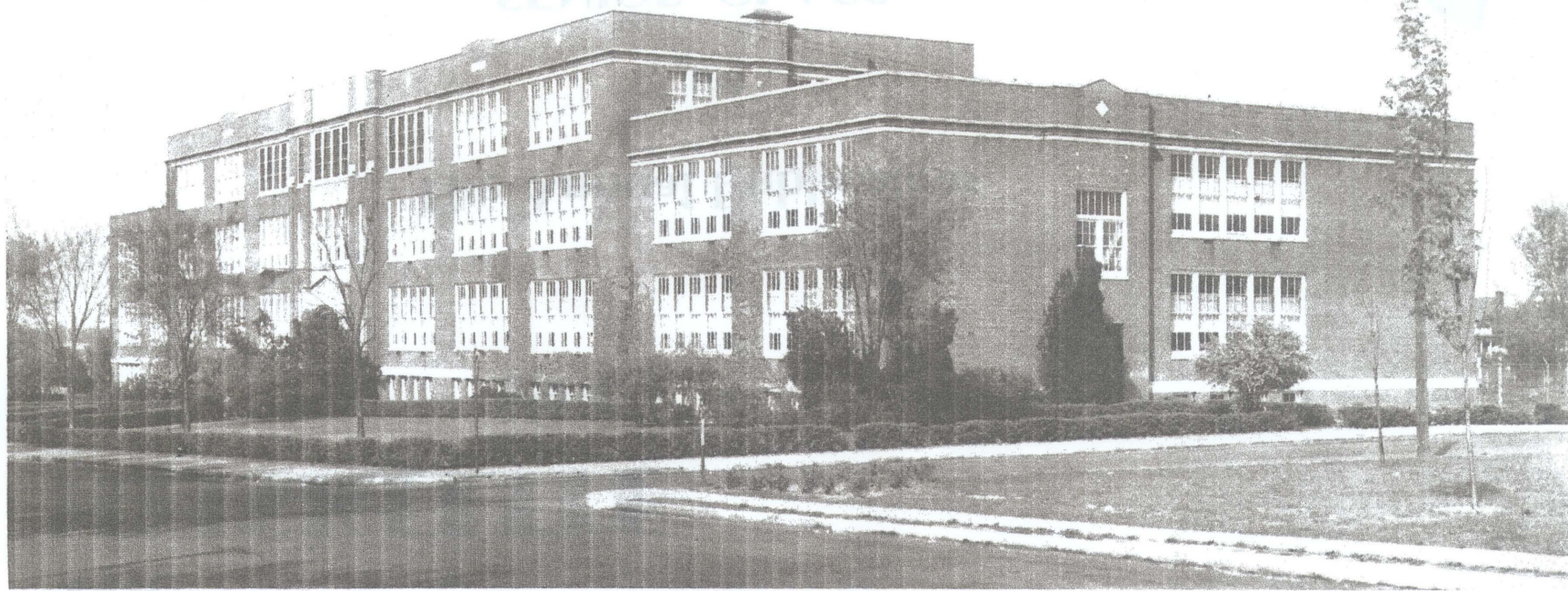


The
HEISKELITE
1943

The Annual Publication
of the
SENIOR CLASS
of
Hagerstown High School
Hagerstown, Maryland





ALMA MATER



Photo by U. S. Army Signal Corps

DEDICATION

It is May, 1943. It is a momentous month in a momentous year. It is a month that has played host to the unconditional surrender of the Axis forces in Africa. It is a month that has seen the psychological invasion of the continent of Europe play havoc with Axis morale.

On every front today America and her Allies are on the offensive. No longer are American soldiers merely vowing to avenge the humiliation at Pearl Harbor and Corregidor. Each new day finds them scrubbing harder to erase the stains of those complacent defeats.

No longer are the Forces of Good anxiously awaiting the decisions of Axis leaders before they act. American boys and American leaders are no longer waiting for Hitler and Tojo to act first. Not now! Those days are gone forever! American troops are now taking their orders from the Government of the United States of America.

And there is one man upon whose shoulders falls the responsibility for all of the policies of the government, whether they be military, political, or economic. The whole world waits in breathless anticipation for each decision that he makes. The people of the United States have elected him to lead them during this great world crisis. And Franklin Delano Roosevelt is leading them. Under his courageous leadership a once unprepared and nationalistic America is rivaling the production rate of all other countries combined and is determined to forge a world peace that will endure forever.

To the President and Commander-in-Chief of the Armed Forces of the United States of America we, the class of '43, proudly dedicate this chronicle of our school life.



MR. JOHN D. ZENTMYER
Principal



MISS CATHERINE BEACHLEY
Vice-Principal

FACULTY

Miss Catherine Beachley, A. M., *Spanish*
 Mrs. Elise G. Bounds, A. B., *English*
 Miss Innes Boyer, A. M., *English*
 Miss June Collison, A. M., *History*
 Mrs. Mitchell Fockler, *Commercial*
 Miss Mary Jackson, A. M., *History*
 Miss Mary Kaylor, A. M., *Commercial*
 Miss Mildred Keirn, A. B., *Mathematics*
 Miss Rebecca W. Kern, B. S., *Physical Education*
 Miss Jean Moser, A. M., *History, Political Science*
 Miss Ethel M. Rinehart, Ed. M., *Commercial*
 Miss Virginia Shaver, B. S., *Home Economics*
 Miss Rachael M. Sheetz, A. M., *English*
 Miss Lois Simon, A. M., *Home Economics*
 Mrs. Lauran D. Sowers, A. B., *Librarian*
 Mrs. Raymond Stouffer, A. B., *Latin*
 Mrs. Robert Towson, Jr., A. B., *Spanish*
 Miss Edna Triesler, A. B., *French, English*
 Mrs. Samuel C. Troupe, A. B., *English*
 Miss Electa Ziegler, A. B., *Glee Club, Sophomore Chorus*

Mr. Simon Clopper, M. S., *Chemistry, Physics*
 Mr. Earl Coffman, A. B., *Commercial*
 Mr. William L. Donaldson, M. S., *Mathematics*
 Mr. Donald Ellsworth, *Technical*
 Mr. Eston F. Fox, A. B., *Science, Aeronautics*
 Mr. Merle Funk, A. B., *English*
 Mr. Harold Green, B. S., *Mathematics, Physics*
 Mr. George W. Gustafson, A. M., *Woodwork*
 Mr. Earl D. Huyett, B. S., *Technical*
 Mr. Donald G. Kaylor, A. M., *History*
 Mr. Herbert C. Logsdon, B. S., *Drafting*
 Mr. John C. Long, *Technical*
 Mr. Victor J. Marietta, M. S., *Orchestra, Band*
 Mr. Harry R. Poole, A. B., *Mathematics*
 Mr. H. Edwin Semler, B. S., *Physical Education*
 Mr. Lawrence Showe, A. B., *English*
 Mr. Joseph Shuck, A. B., *Science*
 Mr. Kenneth G. Stoner, A. M., *History*
 Mr. Joseph Troxell, *Machine Shop*
 Mr. Alvin L. Yodis, A. B., *Radio, Electricity*
 Mr. John D. Zentmyer, A. M., *Principal*



E. Cushen, W. Elgin, E. Kidwell, P. McFarland

SENIOR CLASS HISTORY

President..... William Elgin
Vice-President..... Paul McFarland
Secretary..... Elaine Kidwell
Treasurer..... Edward Cushen

Graduation is here! Can you imagine it? It seems such a short time ago that we came to H. H. S., timid little greenies. Remember how they used to laugh at us for going to class in lines? But their

chiding couldn't stop us. In fact they soon found out that nothing could. It was apparent from the beginning that the class of '43 was out to make new records in everything in which it participated.

As juniors we became earnestly enthusiastic about high school. We tackled every job within sight—athletics, clubs, campaigns, and studies. The Dramatic Club drew heavily upon the talent of our class and produced a play almost totally cast with juniors. The H. W. N. W., school orchestra, and band were well supported by energetic classmates. School spirit, cooperation, and initiative, made our class an outstanding one.

At last the senior year, dream of every underclassman, came 'round. However, it was quite different from other senior years. A great world conflict left its card at H. H. S. and vast changes took place. Courses were altered to comply with war service demands; many extra-curricular activities were eliminated. The Victory Corps and Civilian Defense Corps were inaugurated. Some of us worked in defense plants after school hours; others left for the armed services before graduation.

As for the distant future—it appears very hazy. An uncertain and troubled immediate one lies ahead. We will not fear it, though. Our opportunity for service is now at its maximum.

The class of '43 will shoulder its responsibilities with the same zeal, energy, and ability characteristic of the work that was accomplished during its school years.

The Heiskelite — 1943

ARTHUR M. ALEXANDER
"Jim"
General

ARTHUR WILLIAM ALLEN
"Art"
General
Intramurals II, III.

JEANNE BACHTELL
Academic
Glee Club II; Dramatic Club III, IV;
"Life Begins at 16" Com. III; Science
Club IV; Spanish Club IV; Intramural
Sports II; Victory Corps IV; H. W. N.
W. II; "Cuckoos on the Hearth" Com.
III.

B. RONALD BAKER
"Bob"
General

IVALOE ALEXANDER
"Ivy"
Academic

Basketball II, III; Fieldball II; Intra-
mural Council—Sr. Manager, IV; His-
tory Club IV; Science Club IV; Dra-
matic Club III, IV; Spanish Club IV;
H. W. N. W. IV.

RAY G. AMBROSE
Vocational

DORIS ARNSPARGER
"Arnsie"
General
H. W. N. W. IV.

LILLIAN MARIE BACHTELL
"Lil"
General

VIOLET BAKER
General

BETTY JEAN BARE
"Bet"
Commercial
Glee Club II.

RICHARD ALGER
"Dick"
Vocational

PAUL R. ATHEY
"Stump"
Vocational
Football IV; Basketball III, IV; Baseball
II, III; Navy IV.

MARIAN ELIZABETH BAKER
Academic
Glee Club II, III, IV; Math. Club III, IV;
Science Club IV; History Club IV; H.
W. N. W. II, III, IV; A. V. S. O. III;
Heiskelite IV; Quill and Scroll IV; "Life
Begins at 16"—Com. III; "Cuckoos on
the Hearth"—Com. IV.

ROBERT BARNEY
Vocational
Student Council III; Radio Club II.

Arthur M. Alexander

Ivaloe Alexander

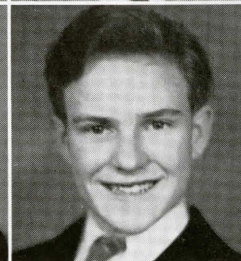
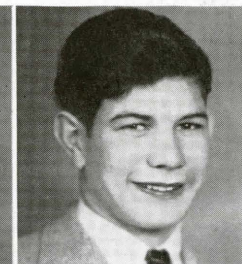
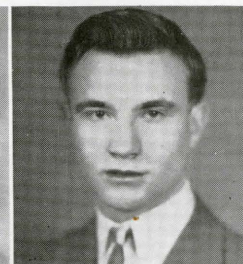
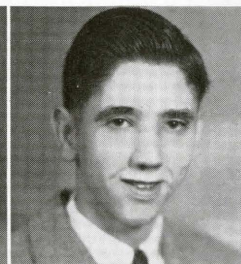
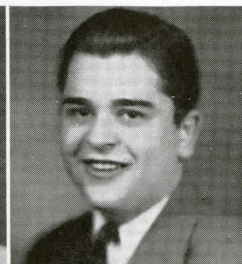
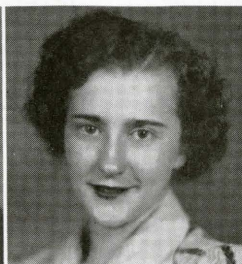
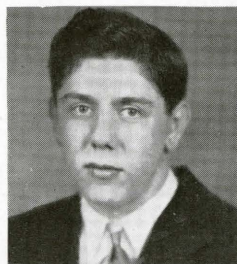
Richard Alger

Arthur W. Allen

Ray G. Ambrose

Doris Arnsperger

Paul R. Athey



Jeanne Bachtell

Lillian M. Bachtell

Marian E. Baker

B. Ronald Baker

Violet Baker

Betty J. Bare

Robert Barney

The Heiskelite — 1943

Gertrude G. Barnhart

Inez Barr

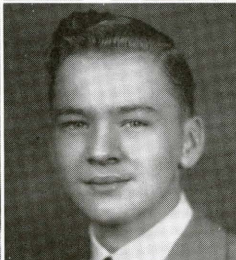
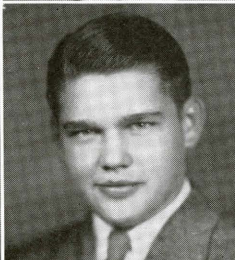
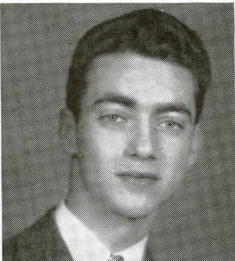
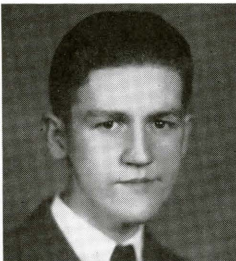
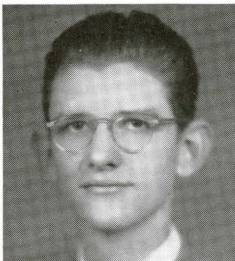
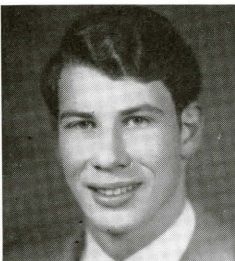
Early W. Bates

Neill C. Baylor

Donovan R. Beachley

Carl Bender

Jacob B. Berkson



William O. Binkley

Delmonte Bishop

Lillian E. Black

Stuart Blickenstaff

Elizabeth L. Boardman

Gilbert P. Bohn

Ruth A. Bondurant

GERTRUDE GAIL BARNHART

"Gertie"

Commercial

Glee Club II, III, IV; Double Circle III, IV.

INEZ BARR

General

EARLY W. BATES

"Worm"

Commercial

Softball II; Intramurals II, III.

NEILL C. BAYLOR

"Jungle Jim"

General

Intramurals II, III.

DONOVAN REICHARD BEACHLEY

"Don"

Academic

Camera Club II, III; Glee Club II; Science Club III, IV; Math. Club IV; Heiskelite Business Manager IV.

CARL BENDER

"Charles"

Vocational

JACOB B. BERKSON

"Jack"

Academic

Student Council II; H. W. N. W. II, III, IV; Dramatic Club III, IV; Math Club II, III, IV; Science Club IV; Spanish Club IV; History Club IV; "Cuckoos on the Hearth"—Cast IV; Heiskelite—Editor-in-Chief IV; Track II; Football—Mgr. III; Prom Comm. III; Intramural II; Quill and Scroll IV.

WILLIAM OWEN BINKLEY

"Bunny"

Academic

Camera Club II; Band II, III; Spanish Club IV; Dramatic Club IV; Heiskelite IV; H. W. N. W. IV; "Cuckoos on the Hearth"—Com. IV; Math. Club IV; A. V. S. O. III, IV; Prom Committee III.

DELMONTE BISHOP

"Del"

Academic

Glee Club II; Spanish Club IV.

LILLIAN ETHEL BLACK

"Lily"

Commercial

Double Circle III; Glee Club II, III, IV.

STUART BLICKENSTAFF

Vocational

Radio Club II.

ELIZABETH LEE BOARDMAN

"Beth"

Academic

Glee Club III, IV; Dramatic Club IV; Spanish Club IV; H. W. N. W. IV; "Cuckoos on the Hearth"—IV.

GILBERT PLEASANT BOHN

"Gil"

Academic

Aviation Club II; "Life Begins at 16"—Cast III; "Cuckoos on the Hearth"—Cast IV; Dramatic Club III, IV; Spanish Club IV; Math. Club IV; History Club IV; Student Council III; H. W. N. W. IV; Prom Committee III; Heiskelite IV; "Four Daughters"—Cast IV.

RUTH ANN BONDURANT

"Ann"

Academic

Quill and Scroll III, IV; Dramatic Club III, IV; "Life Begins at Sixteen"—Com. III; French Club III, IV; H. W. N. W. Staff II, III—Editor-in-Chief IV; Camera Club III; History Club III, IV; Heiskelite IV; Stamp Club II, III; Math. Club IV; Prom Com. III; Rep. Student Life Magazine.

The Heiskelite - 1943

MIRIAM G. BOWARD

Academic

Glee Club II, III, IV; Spanish Club IV;
Victory Corps IV.

LOIS M. BOWERS

Commercial

MILDRED E. BOWERS

"Mimi"

Academic

Glee Club II, III, IV; Camera Club III;
Dramatic Club III, IV; Math. Club III,
IV; Spanish Club IV; Science Club IV.

REBECCA J. BOWERS

"Becky"

Academic

Dramatic Club III, IV; Spanish Club IV;
Science Club IV.

EMMA GRACE BOWMAN

"Amy"

Academic

Glee Club II, III, IV; Spanish Club IV.

HUGH E. BOYER

Vocational

BETTY ARLENE BRANDENBURG

"Brandy"

Academic

HUBERT ALDINE BRANDENBURG

Academic

Dramatic Club IV; Spanish Club IV,
Pres.; H. W. N. W. IV; Math. Club IV.

WILMA BREWBAKER

"Billy"

Academic

Glee Club II, III, IV; Math. Club II, III;
Camera Club II; Aviation Club III;
Spanish Club IV; Intramurals II, III.

BETTY L. BREWER

General

Glee Club II, III, IV.

JACOB ROSS BREWER

"Jake"

General

Dramatic Club III; Intramural II, III;
H. W. N. W. II, III; Army IV.

ROSALIE DOWNING BREWER

"Rosie"

Academic

Glee Club II, III; Fieldball II, Camera
Club III; Intramurals II, III; Dramatic
Club III; French Club III; History Club
III; H. W. N. W. II, III.

GEORGE DONALD BREY

"Don"

Academic

Camera Club II; Aviation Club II;
Science Club III; Math. Club IV; Span-
ish Club IV; Orchestra II, III, IV, All
State Orchestra IV; Heiskelite IV.

GENEVIEVE KATHLEEN BROWN

"Geney"

General

Miriam G. Boward

Lois M. Bowers

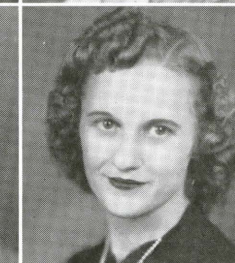
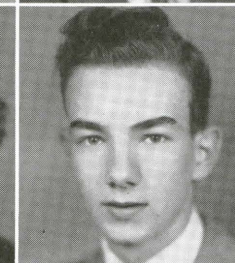
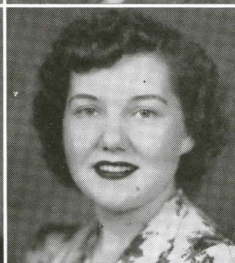
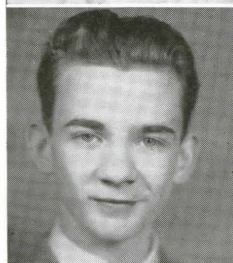
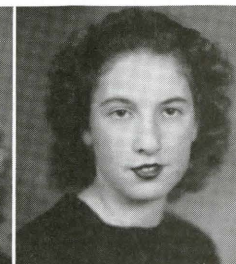
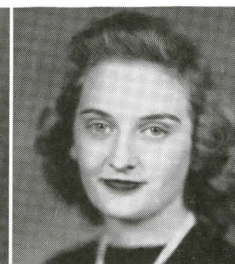
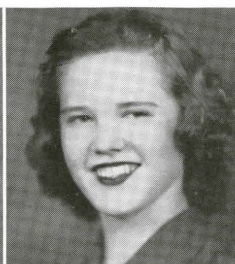
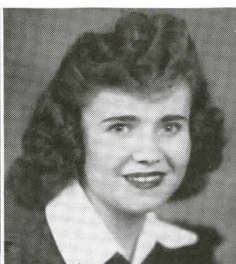
Mildred E. Bowers

Rebecca J. Bowers

Emma G. Bowman

Hugh E. Boyer

Betty A. Brandenburg



Hubert A. Brandenburg

Wilma Brewbaker

Betty L. Brewer

Jacob R. Brewer

Rosalie D. Brewer

George D. Brey

Genevieve K. Brown

The Heiskelite — 1943

Harry H. Brown

Robert G. Bruce

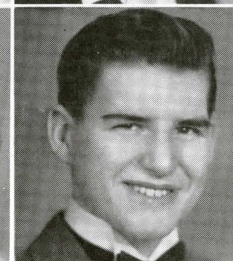
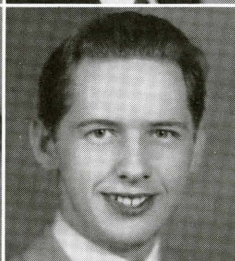
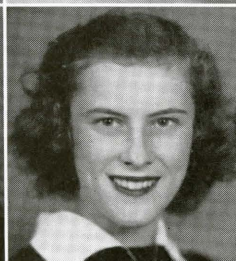
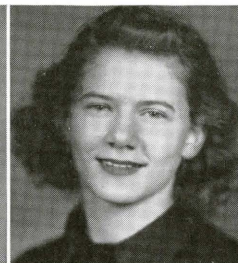
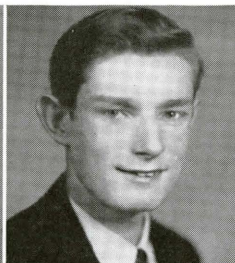
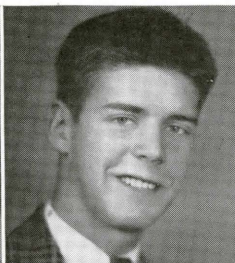
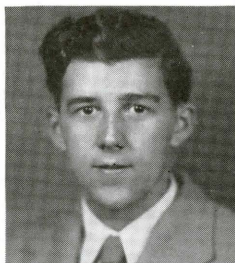
Patsie A. Buck

James Butts

Grace N. Byers

Betty A. Calhoun

Betty J. Carpenter



June Cassatt

Nancy S. Clagett

Jeanne E. Clark

Charles C. Clipp

Margaret Cochrane

C. Nadene Cover

Charles E. Creager

HARRY H. BROWN
Vocational

JAMES BUTTS
"Jimmy"
General

JUNE CASSATT
"Dazey June"
Academic

CHARLES C. CLIPP
Vocational
Glee Club II, III; Student Council II.

Intramurals III; Junior Varsity Basketball III; Varsity Baseball III.

Aviation Club II; Camera Club II; H. W. N. W. II, III, IV; Dramatic Club III, IV; "Life Begins at Sixteen"—Com. III; "Cuckoos on the Hearth"—Com. IV; Spanish Club IV; Intramural Council III; Intramurals II, III, IV; Heiskelite IV; Victory Corps IV.

ROBERT G. BRUCE
"Bob"
General

GRACE N. BYERS
"Tats"
Academic

MARGARET COCHRANE
"Peggy"
General

Football II, III, IV; Basketball III, IV; Intramurals II, III.

Aviation Club II, III; Camera Club II; Victory Corps IV.

NANCY SUE CLAGETT
"Suzy"
Academic

C. NADENE COVER
Academic
Glee Club II, III; H. W. N. W. III; Math. Club IV.

Science Club IV; Dramatic Club III, IV; Spanish Club IV; Glee Club II; H. W. N. W. III, IV.

PATSIE ANNE BUCK
"Pat"
Academic

BETTY ARLINE CALHOUN
"Bessie"
General
Intramurals IV.

JEANNE ELIZABETH CLARK
General

CHARLES E. CREAGER
Academic

History Club IV; Science Club IV; Dramatic Club IV; Glee Club II.

BETTY JANE CARPENTER
General

Fieldball II, III, IV; Basketball II, III, IV; Intramurals II, III, IV; Heiskelite IV.

The Heiskelite — 1943

VICTOR L. CRIST
"Pogey"
Vocational
 Camera Club II; Heiskelite Staff IV;
 H. W. N. W. IV.

HILDA MARY CRONIN
"Hildie"
General
 Camera Club II, III; H. W. N. W. III,
 IV; Aviation Club II, III; Spanish Club
 IV; Intramurals II, III.

RUTH CROSSWHITE
"Iggy"
Commercial
 "Jitterbugs of 1941" II; Dramatic Club
 IV.

MARGARET L. CROWTHER
"Peggy"
General

JEAN E. CRUNKELTON
General
 VIVIAN C. CULLISON
"Sis"
General
 Basketball II; Intramurals II, III, IV.

VIVIAN CATHERINE CUNNINGHAM
"Viv"
General

WALTER EDWARD CUSHEN
"Ed"
Academic
 Glee Club II, III; Camera Club II, III;
 Stamp Club II, III; Math. Club II, III,
 Pres. IV; Quill and Scroll III, Pres. IV;
 Spanish Club IV; H. W. N. W. III, Bus.
 Mgr. IV; Heiskelite III, IV; "Life Begins
 at Sixteen"—Com. III; "Cuckoos on the
 Hearth"—Cast IV; Dramatic Club III,
 IV.

DOROTHY IONE DANSBERGER
"Dot"
Academic
 Glee Club II, III, IV; H. W. N. W. II,
 III, IV; Heiskelite IV; Spanish Club IV;
 Dramatic Club III, IV; Intramurals II;
 Victory Corps IV; "Four Daughters"—
 Cast IV.

DONALD ELWIN DASHNAW
"Don"
General
 Orchestra II, III, IV; Track II; All State
 Orchestra IV; Intramurals II, III.

BETTY JANE DAUGHERTY
"Doc"
Academic
 Glee Club II, III; H. W. N. W. II, III;
 French Club III; Dramatic Club III, IV;
 History Club III.

EILEEN L. DAVIS
"Pat"
General
 Science Club III.

CATHERINE L. DEIBERT
"Kate"
General

CHARLES N. DEIBERT
"Dike"
General
 Intramurals II.

Victor L. Crist

Hilda M. Cronin

Ruth Crosswhite

Margaret L. Crowther

Jean E. Crunkelton

Vivian C. Cullison

Vivian C. Cunningham



Walter E. Cushen

Dorothy I. Dansberger

Donald E. Dashnaw

Betty J. Daugherty

Eileen L. Davis

Catherine L. Deibert

Charles N. Deibert

The Heiskelite — 1945

Rayetta M. DeLauney

Donald L. Delauter

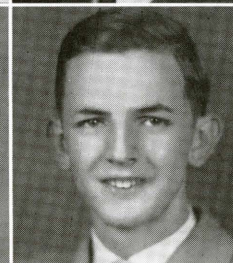
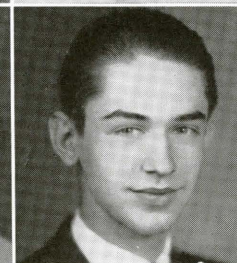
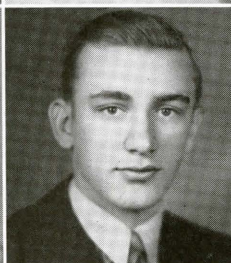
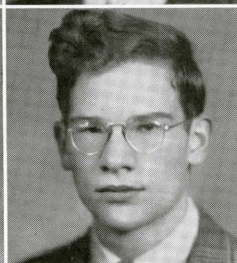
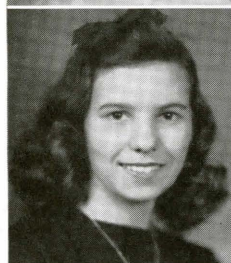
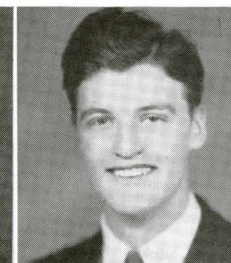
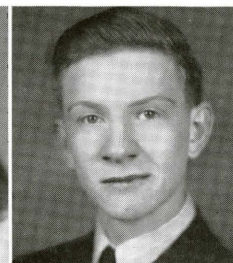
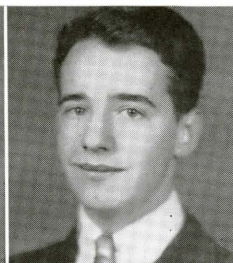
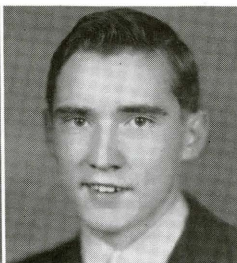
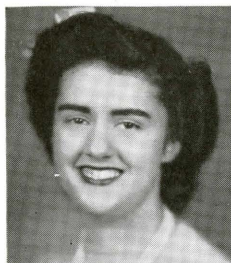
Kathryn J. Dorsey

Simon P. Eccard

Doris K. Elgin

William E. Elgin

George R. English



Verna L. Eshelman

W. C. Eves

William Ferguson

Anna M. Fiery

William S. Fisher

John K. Fockler

Helen V. Foltz

RAYETTA MAE DELAUNEY
Commercial

DONALD L. DELAUTER
Vocational

KATHRYN JANE DORSEY
"Kate"
Commercial
Student Council II; H. W. N. W. Rep.
II, III, IV; Glee Club II; Heiskelite IV.

SIMON PETER ECCARD
"Si"
Academic
Glee Club II, III, IV; Science Club II,
III, IV; History Club III, IV; Math. Club
IV; Dramatic Club III, IV; "Life Begins
at 16"—Com. III; "Cuckoos on the
Hearth"—Com. IV; Heiskelite IV;
French Club III, IV.

DORIS KATHRYN ELGIN
"Dot"
Commercial

WILLIAM EDWARD ELGIN
"Hare"
Academic
Camera Club II; Prom. Committee III;
H. W. N. W. IV; Heiskelite, Bus. Mgr.
IV; Science Club IV; Spanish Club IV;
Basketball IV; Quill and Scroll IV; Pres.
Senior Class IV.

GEORGE ROBERT ENGLISH
"Bud"
Academic

Student Council II, Secretary; Spanish
Club IV; Dramatic Club III, IV; "Life
Begins at Sixteen"—Cast III; "Cuckoos
on the Hearth"—Cast IV; Math. Club
IV; Science Club IV; A. V. S. O. III,
IV; Heiskelite III; Pres. Junior Class.

VERNA L. ESHELMAN
"Slats"
Academic
Intramurals II, III, IV.

W. C. EVES
"Crusty"
General

WILLIAM FERGUSON
"Bill"
Vocational
H. W. N. W. IV.

ANNA MARIE FIERY
Academic
Math. Club II, IV; H. W. N. W. III;
Band II; Heiskelite IV.

WILLIAM SANFORD FISHER
"Bill"
General

Football III, IV; Glee Club III, IV; Av-
iation Club III; Army Air Corps IV.

JOHN KEEDY FOCKLER
"Doc"
Academic

Track Mgr. II; H. W. N. W. III, IV; Heis-
kelite IV; Science Club IV; Math. Club
IV; A. V. S. O. IV; Quill and Scroll IV.

HELEN VIRGINIA FOLTZ
General

ROBERT FRED FORKNER
General

DIANA FRAMM
"Deine"
Commercial

Glee Club II; Math. Club II; Camera Club II; Dramatic Club III, IV; Double Circle Club III, IV; "Life Begins at Sixteen"—Cast III; Science Club IV; Intramurals II, III.

MARIAN LOUISE FREED
"Sammy"
Academic

Glee Club IV; Spanish Club IV; Science Club IV; Intramurals II, III.

ROBERT H. FREY
"Lonnie"
Vocational

Army IV.

DORIS ELIZABETH FULLER
"Torchy"
Commercial
Double Circle Club III.

JOHN H. GARROTT
"Jack"
Academic
Heiskelite IV; Baseball IV.

JACK GARVER
Academic
Heiskelite II, Assoc. Edit. IV; H. W. N. W. III, IV; Dramatic Club III, Pres. IV; "Life Begins at Sixteen"—Cast III; "Cuckoos on the Hearth"—Cast IV; Quill and Scroll IV; Spanish Club IV; Student Council IV; Prom. Committee III; "Four Daughters"—Cast IV.

AUDREY GEHR
"Little Audrey"
Academic
Glee Club II, III, IV; Math. Club II, III; Camera Club II; Aviation Club III; Spanish Club IV; Intramurals II, III.

NANCY ANN GIBNEY
"Nance"
Academic
Camera Club III; Spanish Club IV; Victory Corps IV.

VIRGINIA LEE GILLELAND
"Gilly"
Academic
Stamp Club II, Pres. III; Camera Club Sec'y. III; History Club III, IV; Dramatic Club III, IV; Spanish Club IV.

ELEANOR GOETZ
"Ely"
Academic
Math. Club II; Glee Club II, III, IV; Dramatic Club III, IV; Heiskelite IV; Spanish Club IV.

JEANNETTE GOSSARD
"Nettie"
Commercial
Intramurals II.

CAROLINE M. GREENWALT
"Choc"
Commercial
Band II; Orchestra IV; Double Circle Club III, IV; Intramurals II, III.

AARON N. GRIMM
Vocational

Robert F. Forkner

Diana Framm

Marian L. Freed

Robert H. Frey

Doris E. Fuller

John H. Garrott

Jack Garver



Audrey Gehr

Nancy A. Gibney

Virginia L. Gilleland

Eleanor Goetz

Jeanette Gossard

Caroline W. Greenwalt

Aaron N. Grimm

The Heiskelite — 1945

Elizabeth Grogan

Lois E. Groh

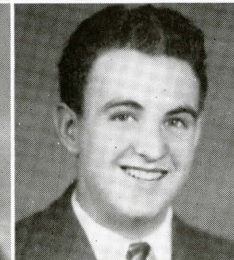
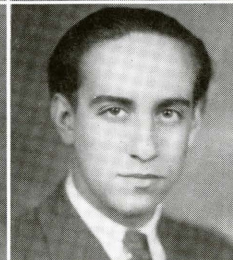
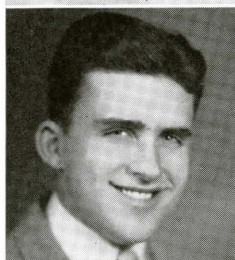
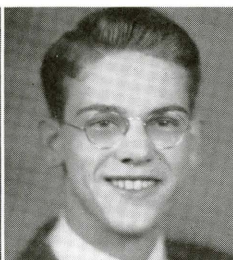
William E. Hammond

Doris L. Hann

Janice Hann

Marian E. Harbaugh

William J. Harper



Charles W. Harris

Dora L. Hartman

Marjorie E. Heeringa

Max L. Hemphill

Howard S. Henson

Jack Hershey

Gerald Hicks

ELIZABETH GROGAN

"Tess"

Academic

Dramatic Club III, IV; H. W. N. W. III.

DORIS LOUISE HANN

"Dotty"

General

CHARLES WILLIAMS HARRIS

"Bill"

General

Glee Club III; Football IV.

HOWARD S. HENSON

"A-1"

Vocational

LOIS ELIZABETH GROH

Academic

Glee Club II, III, IV; Dramatic Club III, IV; "Life Begins at Sixteen"—Cast III; French Club III, IV; History Club IV; H. W. N. W. III, IV; Heiskelite IV.

JANICE HANN

"Red"

General

Intramural Sports II, III, IV.

DORA LEE HARTMAN

"Dode"

Academic

Glee Club II.

JACK HERSHEY

"Hank"

Academic

Band II; Aviation Club II; Camera Club II; Basketball II, III, IV; Intramurals II, III; Spanish Club IV; Victory Corps IV.

MARIAN E. HARBAUGH

"Tuppy"

Academic

Basketball II; Fieldball II; Intramural Council II; History Club III.

MARJORIE EVELYN HEERINGA

"Margie"

Commercial

Glee Club III; Double Circle Club III.

WILLIAM EDWARD HAMMOND

"Bill"

Academic

Glee Club II, III, IV; Dramatic Club IV; Science Club IV; Spanish Club IV; Victory Corps IV; Asst. Mgr. Football III; Intramurals II, III.

WILLIAM J. HARPER

Vocational

Radio Club II.

MAX L. HEMPHILL

Vocational

GERALD HICKS

"Hicksie-Boy"

General

Intramurals II, IV; Band and Orchestra II, III, IV; All State Orchestra IV.

The Heiskelite — 1943 —

JERRY HICKS
"Hicksy-Boy"

General

Baseball II, III; Football II, III, IV;
Basketball IV.

ANN ELIZABETH HILDEBRAND
Academic

Glee Club II, III, IV; H. W. N. W. II,
III, IV; French Club III, IV; Dramatic
Club IV.

ROBERT L. HOUP
"Bob"

Vocational

Student Council III.

WILLIAM K. HULL
Vocational

BETTE JANE HOGAN
"Hogie"

Commercial

Intramurals II, III, IV.

NORMA K. HOUSE
"Norm"

Commercial

LORRAINE GENEVIEVE IHLEFELDT
Academic

Glee Club II, III, IV; Dramatic Club III;
Math. Club III, IV; French Club III.

JEAN ELIZABETH HIGHBARGER
Academic

Dramatic Club II, III, IV; H. W. N. W.
II, III, IV; Math. Club III, IV; Science
Club IV; Spanish Club IV.

MILDRED CATHERINE HOUSER
"Milly"

Commercial

ANNA MAE HONODEL
"Honny"

Commercial

ISABELLE VIRGINIA IZER
"Izer"

Academic

Glee Club II, III, IV; Math. Club II, III,
IV; French Club III, IV; Dramatic Club
III, IV; "Life Begins at Sixteen"—Com.
III; History Club IV; Science Club IV.

FLOYD H. HIGHTMAN, JR.
"Junior"

Vocational

EDWARD L. HOSE
Vocational

THEODORE S. HULL
"Ted"

Vocational

Radio Club II.

Jerry Hicks

Jean E. Highbarger

Floyd H. Hightman, Jr.

Ann E. Hildebrand

Bette J. Hogan

Anna M. Honodel

Edward L. Hose



Robert L. Houpt

Norma K. House

Mildred C. Houser

Theodore S. Hull

William K. Hull

Lorraine G. Ihlefeldt

Isabelle V. Izer

The Heiskelite — 1943

Susan A. Jacques

Charles J. Jenkins

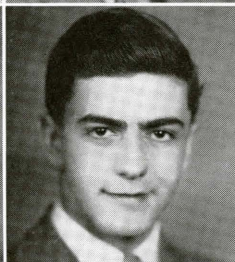
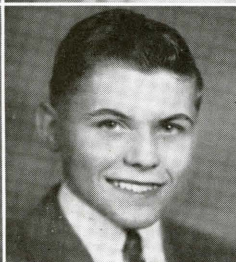
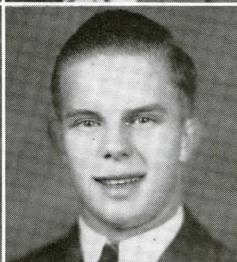
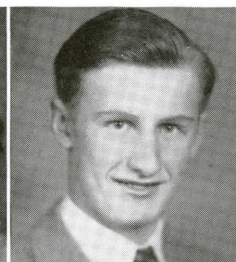
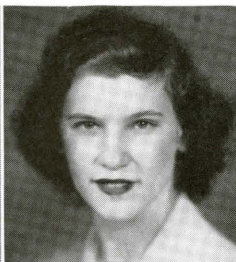
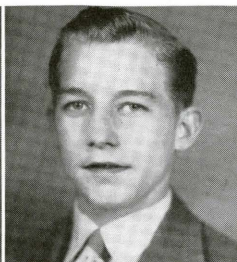
Virginia G. Johnson

John F. Kaylor

Catherine Kershner

Charles R. Kershner

Catherine V. Keyton



Elaine L. Kidwell

S. Braden King

William E. King

Wayne E. Kiser

Mary A. Kline

Eleanora C. Koerner

Katherine W. Kohler

SUSAN ALICE JACQUES

"Sue"

Academic

Intramural Council II, Jr. Mgr. III, Pres. IV; Fieldball II, III; Basketball II, III; Intramurals II, III, IV; H. W. N. W. II, III, IV; Heiskelite IV; History Club III, Pres. IV; Dramatic Club IV; "Cuckoos on the Hearth"—Com. IV; Spanish Club IV; Student Council Sec. II, III, Pres. IV; Victory Corps IV; Quill and Scroll IV; Prom. Com. Chr. III.

CHARLES J. JENKINS

Vocational

VIRGINIA GROVES JOHNSON

"Ginny"

General

JOHN F. KAYLOR

Vocational

CATHERINE KERSHNER

"Bill"

Academic

Aviation Club II; Intramurals II, III; H. W. N. W. IV.

CHARLES R. KERSHNER

Vocational

CATHERINE V. KEYTON

"Kate"

General

ELAINE LUCILE KIDWELL

"Pinkey"

Academic

Glee Club II, III, IV; Camera Club II, III; H. W. N. W. II, III, IV; "Life Begins at Sixteen"—Cast III; "Cuckoos on the Hearth"—Com. IV; Prom. Committee III; Dramatic Club III, IV; Spanish Club IV; Quill and Scroll IV; Student Council II, III; History Club III; Jr. Class Treasurer III; Sr. Class Secretary IV; Heiskelite IV.

S. BRADEN KING

"Boo"

General

Band III, IV; Orchestra IV; Glee Club IV.

WILLIAM EDWARD KING, JR.

"Bill"

Academic

H. W. N. W. II; Orchestra II, III, IV; Cheerleader III; Track II, III; Math. Club IV; Spanish Club IV; A. V. S. O. III, IV.

WAYNE E. KISER

"Sam"

Vocational

Student Council III, IV; Heiskelite IV.

MARY ALICE KLINE

"Knothead"

Commercial

Intramurals II, III; Double Circle Club III; Victory Corps IV; Heiskelite IV.

ELEANORA C. KOERNER

"Buzz"

Academic

Dramatic Club IV.

KATHERINE WRIGHT KOHLER

"Kate"

Academic

Glee Club II, III; Dramatic Club III, IV, French Club III, IV; H. W. N. W. III, IV; Stamp Club II; "Life Begins at Sixteen"—Com. III.

The Heiskelite — 1943

HELEN LOUISE KOONS

"Whitey"
General

Softball II.

MARTHA NORA KOONS

"Marty"
General

Glee Club II, III, IV.

STEPHEN ORNE KREBS

"Steve"
Academic

Orchestra II; Math. Club III, IV.

MILDRED R. LETTICH

"Milly"
General

JOSEPHINE L. LEWIS

"Joe"

Commercial

Intramurals II, III; Glee Club II, III, IV.

WALTER M. LIAS

"Marburg"
Vocational

ELIZABETH ANNE LILLARD

"Betty"

Academic

Spanish Club IV.

NEVIN W. LINDSAY

Academic

Glee Club II; Student Council II; Science Club III, IV; Spanish Club IV; History Club IV; Dramatic Club IV; Math. Club IV.

RUTH ALLEN LOY

"Pat"

Academic

Basketball II; Fieldball II; Volley Ball II, III; Intramurals II, III, IV; H. W. N. W. II, III; French Club III; Dramatic Club III, IV; "Life Begins at Sixteen"—Cast III; State Field Meet II.

PHYLLIS L. LUSHBAUGH

"Phil"

Academic

Glee Club II, III, IV; History Club III, IV; French Club III, IV; Dramatic Club III, IV; Intramurals II, III, IV; H. W. N. W. IV.

WILMA JUNE LYNN

General

JUDITH LEAH LYON

"Judy"

Academic

Intramural Council II, III—Jr. Mgr.—Sec. IV; Fieldball II, III; Basketball II, III; Intramurals II, III, IV; H. W. N. W. IV; Heiskelite IV; History Club IV; Dramatic Club IV; "Cuckoos on the Hearth"—Com. IV; Spanish Club IV; Victory Corps IV; Prom. Committee III.

MARY MARGARET MAIN

General

Glee Club II, III, IV.

HELEN D. MANCINI

"Chick"

Commercial

Basketball II; Softball II; Double Circle Club III; Student Council IV.

Helen L. Koons

Martha N. Koons

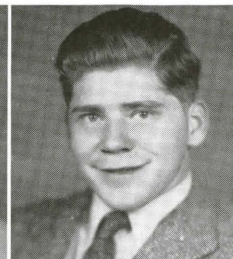
Stephen O. Krebs

Mildred R. Lettich

Josephine L. Lewis

Walter M. Lias

Elizabeth A. Lillard



Nevin W. Lindsay

Ruth A. Loy

Phyllis L. Lushbaugh

Wilma J. Lynn

Judith L. Lyon

Mary M. Main

Helen D. Mancini

The Heiskelite — 1943

BETTY JANE MILLER
"Bettsy"
General

MILDRED M. MILLER
"Milly"
Commercial
Glee Club II, III, IV.

BETTY MONGAN
Commercial

EUGENE MOWEN
"Jeep"
Vocational

DORIS ANN MILLER
"D. A."
Academic

Glee Club II, III, IV; Spanish Club IV;
History Club IV; Stamp Club II, III;
Dramatic Club III, IV; Heiskelite IV;
H. W. N. W. II, III, IV.

LEONARD MILLS
"Sap"
Vocational
Aviation Club II, III.

CHARLES MORNINGSTAR
"Chad"
Vocational
Heiskelite IV; Army IV.

GERALD MYERS
"Jerry"
Vocational
Glee Club II, III.

ORALEE VIRGINIA MOSS
"Blondie"
Commercial
Intramurals II.

GORDON MYERS
"Gordy"
Vocational

DOROTHY MAE MILLER
"Dot"
Commercial

GLORIA JEAN MOATS
"Sugar-Foot"
Academic
History Club III; Intramural Sports II,
III, IV.

JUNE E. MOULDEN
"Junie"
Academic
Band I, II; Glee Club III; History Club
III, IV; Dramatic Club III, IV; French
Club III.

ROBERT L. MYERS
"Bob"
General
Orchestra II; Band II, III.

Betty J. Miller

Doris A. Miller

Dorothy M. Miller

Mildred M. Miller

Leonard Mills

Gloria J. Moats

Betty Mongan



Charles Morningstar

Orale V. Moss

June E. Moulden

Eugene Mowen

Gerald Myers

Gordon Myers

Robert L. Myers

The Heiskelite — 1943

Harold P. Newkirk

Frederick R. Neikirk

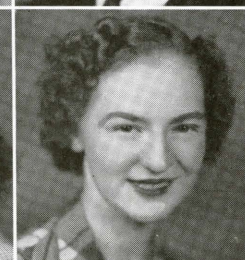
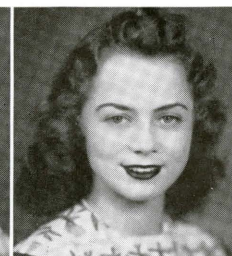
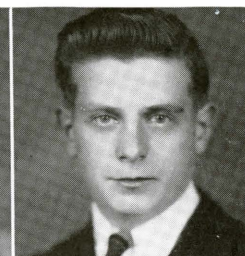
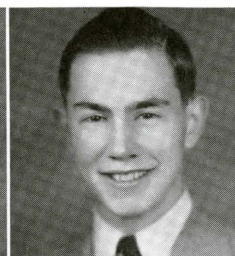
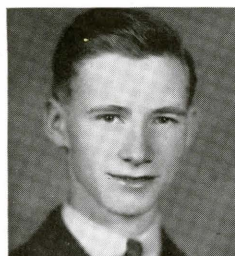
Glenn Oaks

Doris L. Ohler

Dorotha Palmer

Margaret J. Penner

Mary E. Phillippy



Constance A. Phillips

Dorothy F. Plack

Hester B. Poe

Betty J. Poffenberger

Dotty J. Poffenberger

Harry Poffenberger

Richard Poffenberger

HAROLD PRESTON NEWKIRK
General
Track II, IV; Intramurals II, III, IV.

FREDERICK RICHARD NEIKIRK
"Pedro"
Academic
Band II, III, IV; Radio Club II; Dramatic Club IV; Spanish Club IV; Orchestra IV.

GLENN OAKS
Vocational
Navy IV.

DORIS L. OHLER
"Dorry"
Academic
Dramatic Club III, IV; Glee Club II, II, IV; History Club III, IV; Spanish Club IV.

DOROTHA PALMER
"Dot"
Glee Club II; History Club III, IV; Dramatic Club III, IV; French Club III; Science Club IV; H. W. N. W. III, IV; "Four Daughters"—Cast IV.

MARGARET JANE PENNER
"Janie"
General

MARY ELLEN PHILLIPPY
Academic
Glee Club II, III, IV; History Club III, IV; Science Club III, IV; Dramatic Club III, IV; "Life Begins at Sixteen"—Cast III; Spanish Club IV; Math. Club IV; Heiskelite IV; H. W. N. W. II, III, IV; Intramurals II, III; Cheerleader IV; "Four Daughters"—Cast IV.

CONSTANCE A. PHILLIPS
"Connie"
Academic
Glee Club II, III, IV; History Club III, IV; Science Club IV; Spanish Club IV; Math. Club IV.

DOROTHY FOLTZ PLACK
"Dotty"
Academic
Fieldball II, III; Basketball II; Intramural II, III, IV; Intramural Council III, IV; "Cuckoos on the Hearth"—Cast IV; H. W. N. W. II, III, IV; Heiskelite IV; French Club III, IV; History Club III, IV; Math. Club IV; Dramatic Club III, IV; Quill and Scroll IV.

HESTER BERNICE POE
"Hess"
Academic
Camera Club II; Aviation Club III; Spanish Club IV; H. W. N. W. III, IV.

BETTY JANE POFFENBERGER
Academic
Glee Club III, IV; History Club III, IV; Math. Club IV; Spanish Club IV; H. W. N. W. IV; Science Club IV; Victory Corps IV.

DOTTY JANE POFFENBERGER
"Dot"
Academic
Glee Club IV; History Club III, IV; Dramatic Club III, IV; Science Club IV; Math. Club IV; H. W. N. W. IV; Spanish Club IV.

HARRY POFFENBERGER
"Boots"
Vocational

RICHARD POFFENBERGER
"Dick"
General
Band II, III, IV.

The Heiskelite - 1943

VIRGINIA POFFENBERGER
"Ginny"

Commercial
Glee Club III.

RICHARD RAGAN POTTS
"Dick"

General
Intramurals II, III.

ELVA JEAN REED
General

BLANCH M. RESH
"Mickey"

Commercial
Intramurals II; Double Circle Club III.

EDWARD LEE POMEROY

"Wacky"
Academic

RICHARD BERNARD PRICE

"Dick"
Academic

JOSEPH SAMUEL REED

"Joe"
Commercial
Band II, III; Intramurals II, III.

JOHN VERNON REYNOLD

"Jack"
General
Varsity Volleyball II; Intramurals II, III;
Student Council II, III; H. W. N. W. II.

GEORGE WILLIAM POOLE, JR.

"Georgie"
General
Heiskelite IV; Army IV.

IRENE REEDER

"Renie"
Commercial
Heiskelite IV; Student Council III.

General

NANCY RALSTON

"Nan"
Academic

JAMES A. REEDER

"Jim"
Commercial

J. THOMAS REYNOLD

"Tom"
Vocational
Orchestra II; Football III.

HAZEL M. POOLE

General

Glee Club II, III; History Club III, IV;
French Club III, IV; Dramatic Club
III, IV.

Virginia Poffenberger

Edward L. Pomeroy

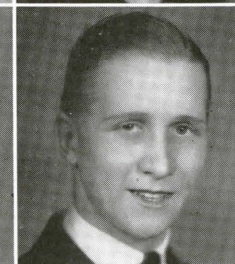
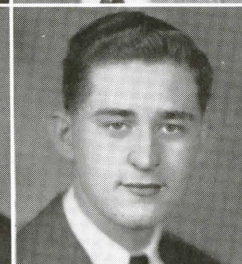
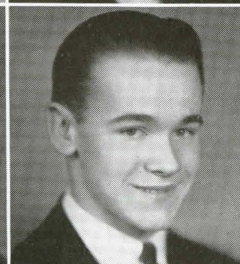
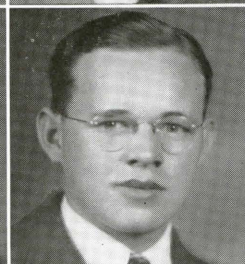
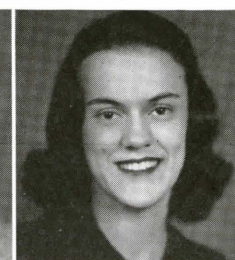
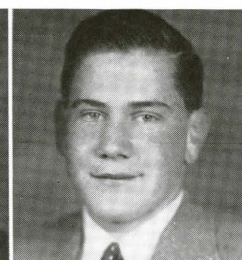
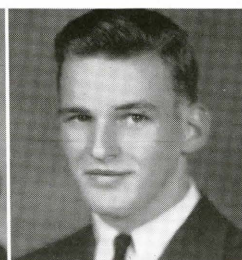
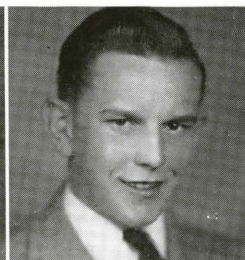
George W. Poole, Jr.

Hazel M. Poole

Richard R. Potts

Richard B. Price

Nancy Ralston



Elva J. Reed

Joseph S. Reed

Irene Reeder

James A. Reeder

Blanche M. Resh

John V. Reynold

J. Thomas Reynold

The Heiskelite — 1943

Victor K. Reynolds

Elsie L. Ridenour

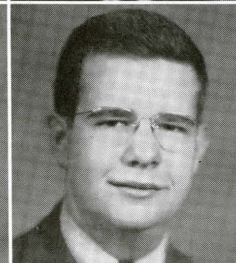
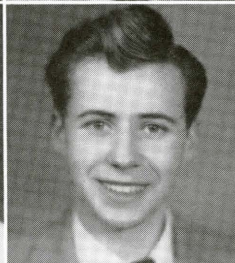
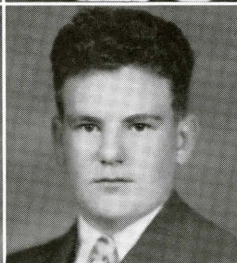
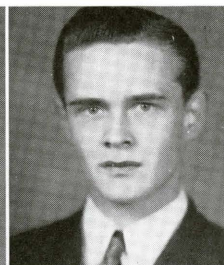
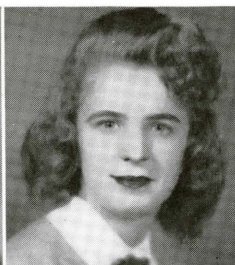
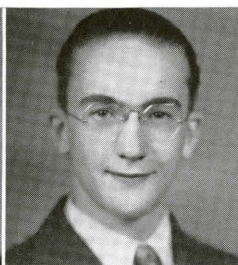
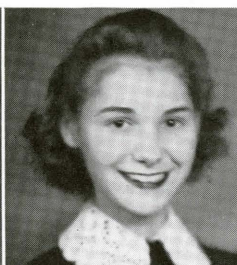
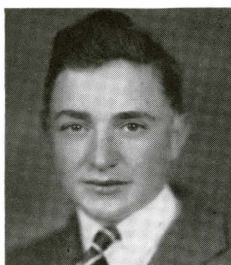
Donald Rider

Delores E. Rinehart

Evelyn M. Rinehart

Mary E. Ringer

Robert Ringer



Betty K. Ritter

Lloyd Rockwell

Mary L. Rodgers

Clara L. Roe

Karl Rohrer

Robert F. Rouzer

Stella A. Rowe

VICTOR KEMP REYNOLDS
"Doc"
Academic

EVELYN MAE RINEHART
"Squirt"
Commercial
Fieldball II.

LLOYD ROCKWELL
"Rocky"
Vocational

KARL ROHRER
"Bud"
Vocational

ELSIE JANE RIDENOUR
"Shorty"
General
Dramatic Club III.

MARY ELIZABETH RINGER
Commercial
Dramatic Club IV; Intramurals II, III, IV.

MARY LOUISE RODGERS
"Skeets"
Commercial
Fieldball III.

ROBERT FRANKLIN ROUZER
"Frank"
General
Glee Club II; A. V. S. O. III, IV; Radio II; Public Address System III, IV.

DONALD RIDER
"Quack"
Vocational

ROBERT RINGER
"Bob"
Vocational
Football IV.

DELORES ELAINE RINEHART
"Sue"
General
Intramurals II, III, IV.

BETTY KATHRYN RITTER
Academic
Glee Club II, III, IV; H. W. N. W. II, III, IV; Dramatic Club III, IV; Science Club III, IV; Spanish Club IV; A. V. S. O. III; Intramurals II, III.

CLARA LENA ROE
"Peggy"
General
Band II, III; Dramatic Club IV; Intramurals II.

STELLA ANNE ROWE
"Stellie"
Commercial
Double Circle Club III.

The Heiskelite - 1943

DONALD RUSSELL

"Abe"

Vocational

Football III, IV; Navy IV.

CHRYN RYERSON

"Bud"

Vocational

Glee Club II.

RUTH SARIKAS

General

MARY ELIZABETH SCHLOSSER

"Betts"

General

Fieldball II, III, Mgr. IV; Basketball II, III, Mgr. IV; Softball II, III, IV.

JULIA SCHNEBLY

"Sneb"

Academic

Orchestra II, III, IV; Glee Club II, III, IV; H. W. N. W. III; Heiskelite IV; "Life Begins at Sixteen"—Com. III; Dramatic Club III, IV; French Club III, IV; Intramurals II; Prom. Com. III; Kee-Mar Alumnae Prize III; Salutatorian IV.

SHERIDAN JANE SCHOEN

"Sherry"

Academic

"Life Begins at Sixteen"—Cast III; French Club III; History Club III; H. W. N. W. II, III; Heiskelite IV; Fieldball II; Basketball II, III; Baseball II, III; Track II, III; Intramurals II, III, IV; "Four Daughters"—Cast IV.

CAMILLA SELLERS

General

WILLIAM R. SHAFFER

"Bill"

Academic

Science Club, Pres. IV; Spanish Club IV; Track II; Sophomore Class V. Pres.; Junior Class V. Pres.; Student Advisory Council II, III.

CHARLES SHANK

Vocational

HELEN SHANK

Academic

WANDA A. SHANTZ

"Was"

General

Intramurals II, III.

DAVID SHAW

"Dave"

General

Intramurals II, III.

BEVERLY LORRAINE SHIREY

"Bev"

Commercial

Glee Club II, III, IV; Student Council II, III, IV; Intramurals II, III; Heiskelite IV.

ROBERT SILVERMAN

"Bob"

Academic

Band II, III.

Donald Russell

Chryn Ryerson

Ruth Sarikas

Mary E. Schlosser

Julia Schnebly

Sheridan J. Schoen

Camilla Sellers



William R. Shaffer

Charles Shank

Helen Shank

Wanda A. Shantz

David Shaw

Beverly L. Shirey

Robert Silverman

The Heiskelite — 1945

HENRY STARTZMAN

Academic

Stamp Club II, III; Glee Club II, III, IV; H. W. N. W. II, III, News Editor IV; Quill and Scroll III, IV; Camera Club II; Math. Club III, IV; History Club III, IV; French Club III, Pres. IV; Vice Pres. Student Council III; Roger Funk Weagley Memorial Prize III; "Four Daughters"—Cast IV; Valedictorian IV.

HAZEL STONESIFER

"Stoney"

Academic

History Club III, IV; Dramatic Club III, IV; Science Club IV; French Club III; H. W. N. W. II, Sports Editor III; Heiskelite IV; Basketball II, IV; Fieldball II; Track II; Sophomore Class Pres. II; Student Council II; Intramurals II, III, IV.

PAUL CLINTON STOTTLEMYER

"Sammy"

Academic

Naval Air Corps IV.

ROLAND STOTTLEMYER

"Lefty"

Vocational

Radio Club II.

MARION STOUFFER

"Buzz"

Vocational

JAMES F. STRINE

"Jimmy"

Academic

Band II, III, IV; Orchestra II, III, IV; Aviation Club II; Camera Club II; Intramurals II, III.

CHARLES WILLIAM STRINE

"Shorty"

General

STEVEN STUBITS

"Toar"

Vocational

Football II, III, IV.

CHARLES J. SUMMERS

"Jake"

General

Basketball II, Dramatic Club IV; Heiskelite Staff IV; Intramurals II, III.

HELEN MARY IRENE SWARTZ

"Swartzie"

General

Glee Club II, III, IV; French Club IV.

RUTH LOUISE THOMAS

"Red"

Academic

Dramatic Club III; French Club III; Glee Club II; Science IV.

PEGGY ANN THUMMA

"Peg"

Academic

Glee Club II, III, IV; Stamp Club II, III; Dramatic Club III, IV; History Club IV; French Club IV.

HELEN ARLENE TROUPE

"Troopie"

Commercial

Glee Club III, IV; Double Circle Club IV; Heiskelite IV; Intramurals II, III, IV.

ELLA TROUPE

"Eloise"

Commercial

Dramatic Club III; Intramurals II, III, IV.

Henry Startzman

Hazel Stonesifer

Paul C. Stottlemeyer

Roland Stottlemeyer

Marion Stouffer

James F. Strine

Charles W. Strine



Steven Stubits

Charles J. Summers

Helen M. I. Swartz

Ruth L. Thomas

Peggy A. Thumma

Helen A. Troupe

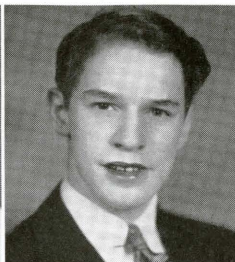
Ella Troupe

The Heiskelite — 1945

Doris E. Valentine



Ralph E. Wallace



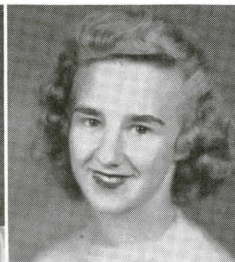
Rosalyn Warner



Edythe M. Warrenfeltz



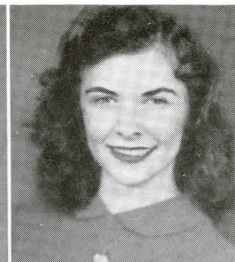
Elsie Watts



Charlotte F. Weiner



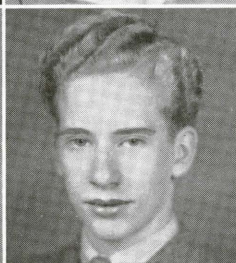
Patricia Welder



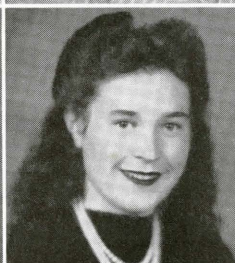
Helen E. Weller



Anna M. Welty



Frederick C. Weibel



Eileen M. Williams



Doris Willis



Jane M. Willis



Virginia Willis

DORIS ELAINE VALENTINE

"Butch"

Commercial

EDYTHE MARIE WARRENFELTZ

"Edy"

Academic

Glee Club II, III, IV; Dramatic Club III.

PATRICIA WELDER

"Pat"

Academic

Glee Club II, III, IV; H. W. N. W. II, III, IV; French Club III, IV; Dramatic Club III, IV.

EILEEN M. WILLIAMS

"Leenie"

Commercial

Dramatic Club IV; Intramurals II.

RALPH EDWARD WALLACE

Academic

Band II; Glee Club II, III, IV; French Club III; Dramatic Club IV; Math. Club IV; History Club IV; "Cuckoos on the Hearth", Stage Mgr. IV; H. W. N. W. II, III; H. W. N. W. Subscription Mgr. IV.

ELSIE WATTS

"Else"

General

Intramurals II.

HELEN E. WELLER

Commercial

Glee Club II, III, IV; Band III; Intarmural Basketball II.

ANNA MARIE WELTY

"Ann"

General

FREDERICK CALVERT WEIBEL

"Fred"

Academic

Track II; Dramatic Club III, IV; Spanish Club IV; Victory Corps IV; "Life Begins at 16"—Com. III; "Cuckoos on the Hearth"—Com. IV; "Four Daughters"—Cast IV.

DORIS WILLIS

"Twinie"

Academic

Glee Club II, III, IV; French Club IV.

JANE M. WILLIS

"Willie"

Academic

Glee Club II, III; History Club III; French Club III, IV; Dramatic Club III, IV; H. W. N. W. II, III; Volleyball II, III; Track II, III.

ROSALYN WARNER

"Pat"

General

Majorette II, III, IV; Glee Club II, III, IV.

CHARLOTTE F. WEINER

"Chickie"

Commercial

Dramatic Club III, IV; H. W. N. W. II, III, IV; Math. Club II; Double Circle Club III; Glee Club II, III; Quill and Scroll III, IV; Heiskelite IV.

VIRGINIA WILLIS

"Ginnie"

Academic

Glee Club II, III, IV; French Club IV.



Dew E. Wolfe

Martha P. Wolfe

Lucille V. Wolfkill

Walter Worthington

Donald Zombro

DEW ELAINE WOLFE

"Dewee"

Academic

Glee Club II, III, IV; French Club III;
Dramatic Club III; Aviation Club II.

MARTHA PAULINE WOLFE

"Marty"

General

LUCILLE VIRGINIA WOLFILL

"Lukey"

Academic

Orchestra II, III, IV; Glee Club II, III,
IV; Aviation Club II; Math. Club II, III,
IV; Dramatic Club III; All State Or-
chestra IV.

WALTER WORTHINGTON

"Farmer"

Vocational

DONALD ZOMBRO

"Rat"

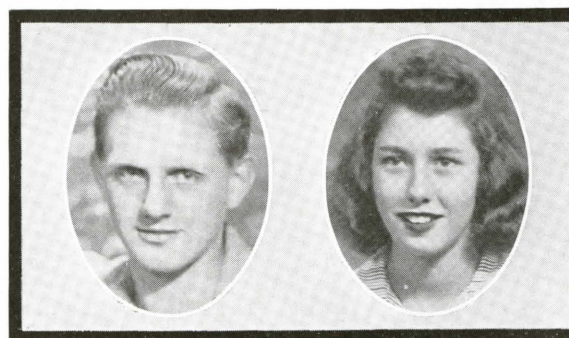
Vocational

IN MEMORIAM

BENJAMIN ROBERT SCHINDEL

January 14, 1925

November 28, 1941



PHYLLIS E. CLEM

October 2, 1925

May 7, 1942

SENIOR CLASS PROPHECY

"—And now we are entering a town that might well be called the most important stop on this tour of famous places—Hagerstown, Maryland."

These words caused the curious sightseers on the upper deck of the touring car to sit up and take notice. The day was warm—one of those balmy, lovely, spring-fever days, and the tourists had been growing drowsier and drowsier, for there had been very little to see between Smithsburg and this town they were now entering.

In Smithsburg they had been fortunate enough to catch a glimpse of the fire chief, Simon Clopper, entertaining the *Rev. Simon Ecard* in his garden. They had also caught a glimpse of the girlhood home of *Miss Susan Jacques*, the popular nurses' instructor of Johns Hopkins Hospital.

Now Hagerstown lay before them like a great, thrilling book. Mr. Wiebel, the clever raconteur, stepped up to the "mike" and began—

"To the far right you can see the estate of the most brilliant linguist of our age, *Mr. Hubert Brandenburg*.

"Directly to your left you may spot the farms of *Hugh Boyer*, *Harold Newkirk*, and *Victor Reynolds*. There's where the University of Maryland carries on its agricultural research work."

Now the car was winding its way through a long lane of shady poplars. In the distance could be seen an imposing white tower of strength, the hospital designed by *Mr. William King*. Here *Dr. Dorothy Foltz Plack*, winner of the Nobel Prize in bacteriology, had discovered the cure for cancer. *Dr. Elaine Kidwell* was working on the cure for spinal meningitis at the present time.

The travelers filed into the large, spacious hospital reception room. *Miss Welder* nudged *Mr. Pomeroy* and said, "Isn't the color scheme lovely? I heard that the decorating was done by *Doris Jane Miles* who's now working on that famous singer's home. Now what is her name—it's either *Dorothy Martin* or *Rosalyn Warner*—oh well, no matter, here come two nurses—our reception committee, no doubt."

The first one approached the group saying, "I'm *Miss Baker*, superintendent of nurses. This is my co-worker, *Miss Harbaugh*, who will be very happy to guide you through our hospital after you've registered with the secretaries, either *Miss Kline* or *Miss Dorsey*. I must tell *Miss Poffenberger* at the switchboard to ring for nurses *Brewbaker*, *Lillard*, and *Calhoun*, who are to report to the fifth floor operating room to assist *Dr. Startzman*."

Miss Harbaugh turned to the group saying, "*Nurse Groh* reports that if you follow her immediately to the balcony of the main operating room you will be able to see *Dr. Binkley* perform an appendectomy. If you're more interested in dietetics, follow *Miss Ralston* and *Miss Brewer* to the kitchen where *Miss Miller* and *Miss Stonesifer* will explain their work for you."

And then they were on the bus again. Mr. Wiebel was announcing, "To your left is the renowned Hager College, just recently established by *Professor George English*. Over in the far corner you can catch a glimpse of a class in calisthenics. *Mr. James Reeder*, the well-known gymnast, is instructing. Over there's coach *Bruce* training next year's football team. That little cottage on the main campus is the Home Economics house where *Miss Dansberger* teaches. That's *Miss Ihlefeldt*, an English teacher, entering the library to chat with *Miss Eshleman*, the librarian."

And now the bus was coming into the heart of town. It was evening, and the lights of the Bijou Theatre were just beginning to glitter. The theatre, under the co-management of *Mr. Gerald Myers*, and *Mr. Charles Morningstar* had had a most successful season. *Jack Garver* was playing his fifteenth week in a play adapted by *Elizabeth Boardman* from his autobiography, *The Evolution of a Moron*.

Across the street, *Sheridan Schoen*, *Judy Lyon*, and *Jeanne Clarke* were starring in the great musical panorama, "To Dance, or Not to Dance," featuring *Bob Silverman's* orchestra, with *Jim Strine* on the drums. *Ruth Thomas* did the costuming, and *Barney and Rouzer, Inc.* were responsible for the unusual lighting and sound effects.

That evening found the tourists in the Arts and Letters Music Hall. The place was overflowing with the elite—there was *J. B. Berkson*, the distinguished young lawyer with three ambulances of his own. There was *Dr. Paul McFarland* whose office girl, *Miss Mary Main*, said he has the largest practice of any dentist in the city. They saw *Jack Garrot*, the artist whose paintings they had admired at the museum in the afternoon. Speaking of museums, *Professor Edward Cushen* was there. He had just returned from Egypt where he had excavated the false teeth of King Tut. *David Shaw* was with him. He had also just returned from Cairo where he had been studying the Egyptian method of embalming.

In one of the box seats sat *Mr. and Mrs. Ralph Wallace*. Mrs. Wallace was busy drinking in all the sights as she talked over all the things that they were to see before leaving this thrilling city.

"Just think, tomorrow we're going to see that rocket ship take off—the one designed by *Bohn and Brey*. I think they said *Bill Elgin* and *Victor Crist* were going to pilot it. Oh, and then in the

afternoon we're going through the newspaper office. I wonder if we'll see the editor, *June Cassatt*, or those two star reporters, *Jerry* and *Gerald Hicks*. Oh, look, Ralph, there's *Anna Mae Honodel*, the President's secretary. Honestly, I don't know when I'll have time to have my hair done, but I must have *Miss Arnsparger* do it. I could do that while you get those new clothes you want from *Kiser's Men's Shop*. I do want you to get that sport coat to wear to the tennis and swimming matches on Wednesday. *Pat Loy's* going to play tennis, so you know there'll be a great crowd. I imagine *Marion Freed* will win the swimming cup, don't you? Why there's *Virginia Gilleland*, the psychiatrist, with *Phyllis Lushbaugh* and *Rebecca Bowers*, those two nurses who posed for that Red Cross advertisement *Ann Bondurant* just put out.

"I'm not sure when that show's going to be that *Don Beachley, Jr.* is writing the jokes for. We can't miss that. You know, those four singers, The Terrytones, are going to be in it. Why, there they are now—*Helen Mancini*, *Ruth Crosswhite*, *Beverly Shirey*, and *Doris Souders*. While you're interviewing *General William Hammond*, I think I'll visit *Chickie Weiner's* shop to find out where she gets all those ideas for the lettering she does. There's *Connie Phillips*—she wrote that best-seller on American Baseball, didn't—" "Sh-sh-sh, Dottie," whispered Mr. Wallace, "the concert is beginning."

The curtain rose and the prominent piano virtuoso, *Miss Julia Schnebly*, began playing.

By the end of the concert the tourists were thoroughly convinced that Westminster Abbey had nothing on Hagerstown, city of the renowned.

S. L. S.